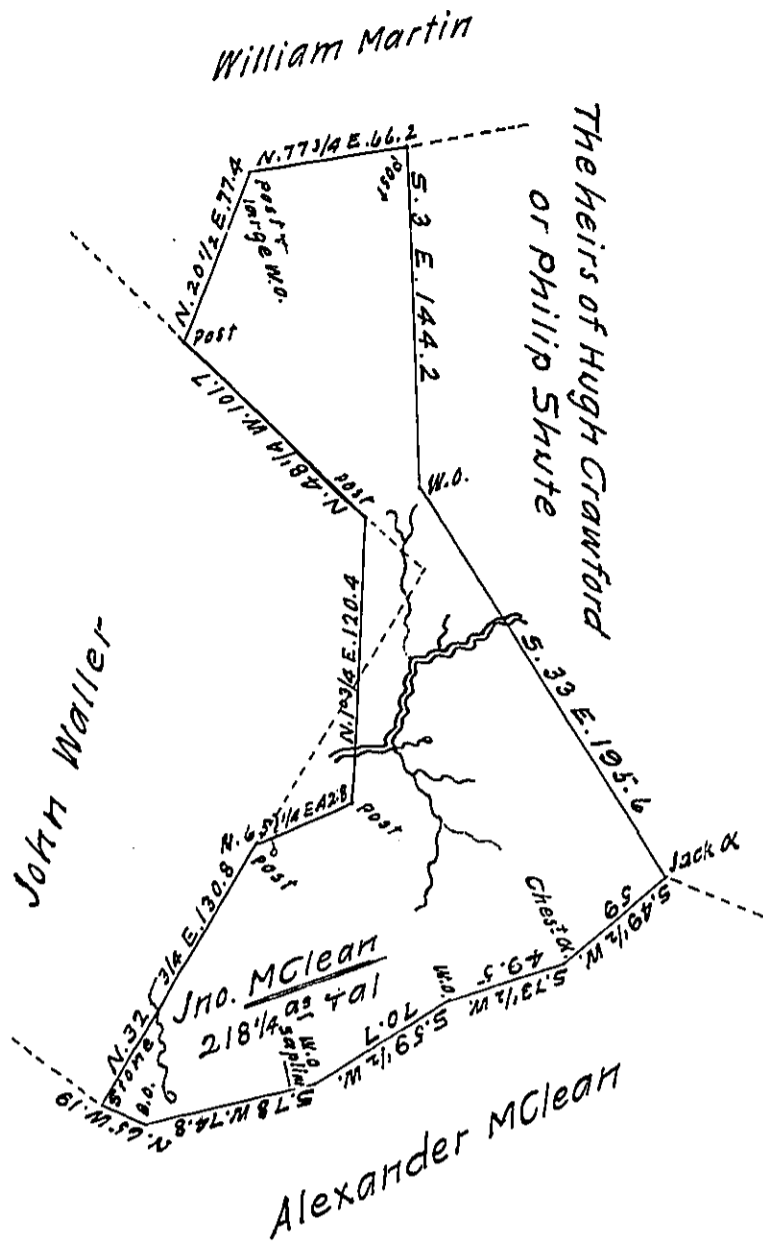


FORM NO. 1.



Situate on Shutes Run a branch of Redstone Creek about one mile from Uniontown and surveyed the 10th day of February 1794 in pursuance of a warrant dated the 23^d day of February 1786.

Alexander McClean Deputy

To Daniel Brodhead Esquire
Surveyor General

Note. The small triangle represented in this draught has been returned to John Waller under a location right and the parties so agreeing have exchanged equal quantities as represented. I have therefore altered the survey at their request and will prepare a draught for the other & as the state will not be injured thereby, I trust no inconvenience will arise

A. McClean

D. B. E. S. G.

IN TESTIMONY that the above is a copy of the original remaining on file in the Department of Internal Affairs of Pennsylvania, made conformably to an Act of Assembly approved the 16th day of February, 1833, I have hereunto set my Hand and caused the Seal of said Department to be affixed at Harrisburg, this twenty fifth day of January 1912

Henry Howell
Secretary of Internal Affairs